

Workshop in geofisica

METODI GEOFISICI A SUFFRAGIO
DELLA GEOLOGIA AMBIENTALE
con particolare attenzione al
monitoraggio di siti sensibili



Rovereto
5 dicembre 2008

SISMICA STREAMER APPLICATA A SITI SENSIBILI

PROGEO S.r.l.

Via Talete 10/8 Forlì

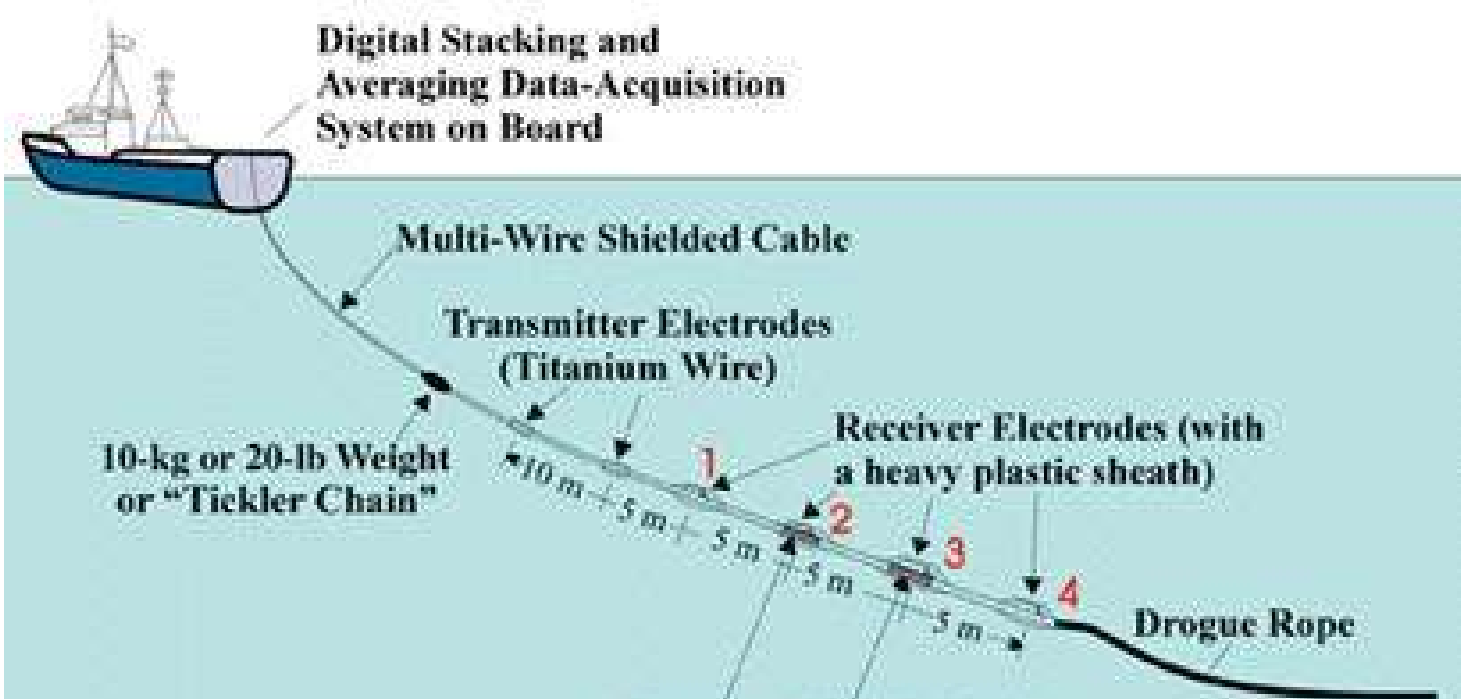
www.progeo.info

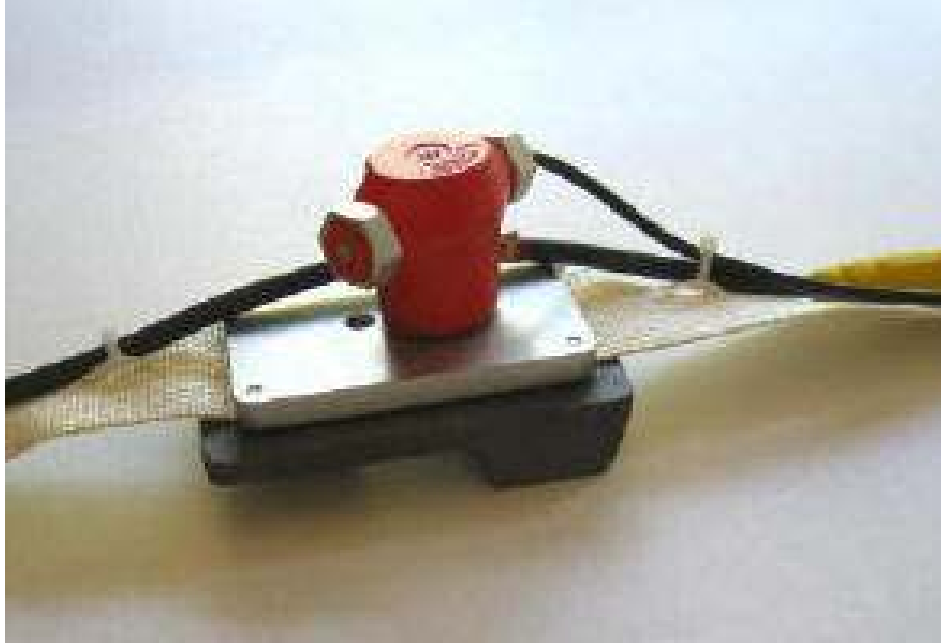
mail.progeo@gmail.com

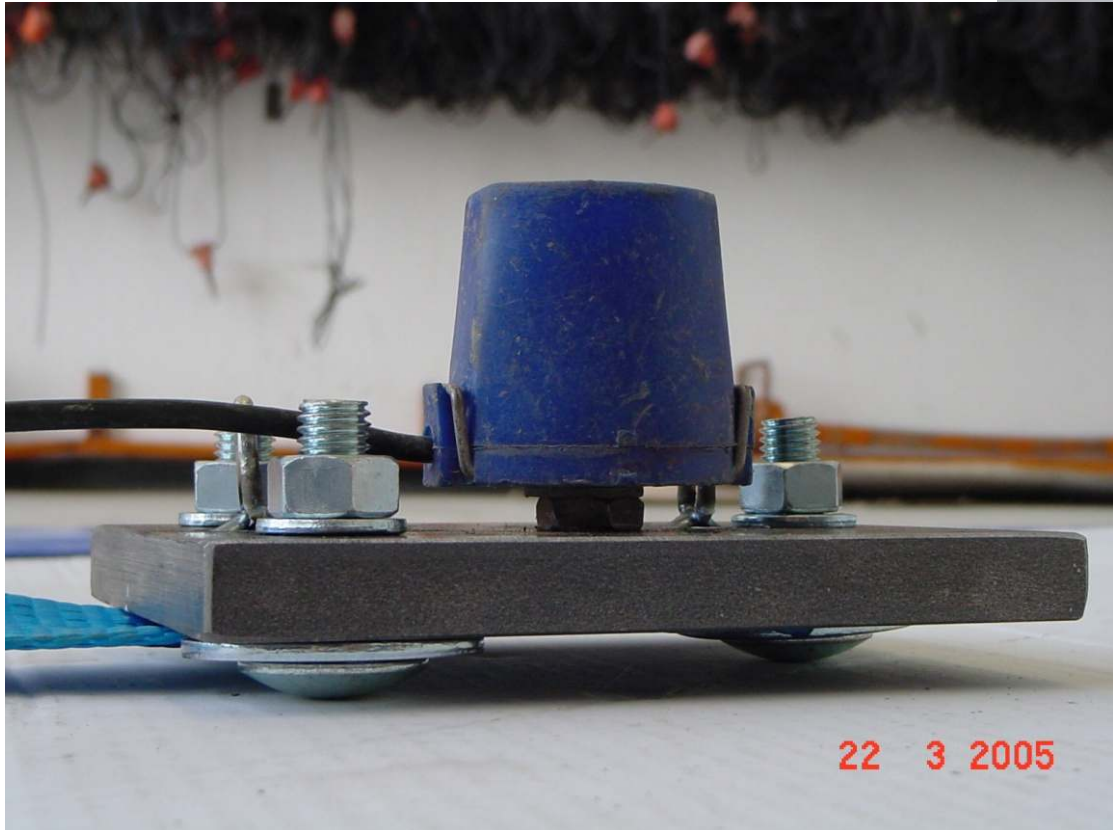
Dr. Geol. Gabriele Pulelli

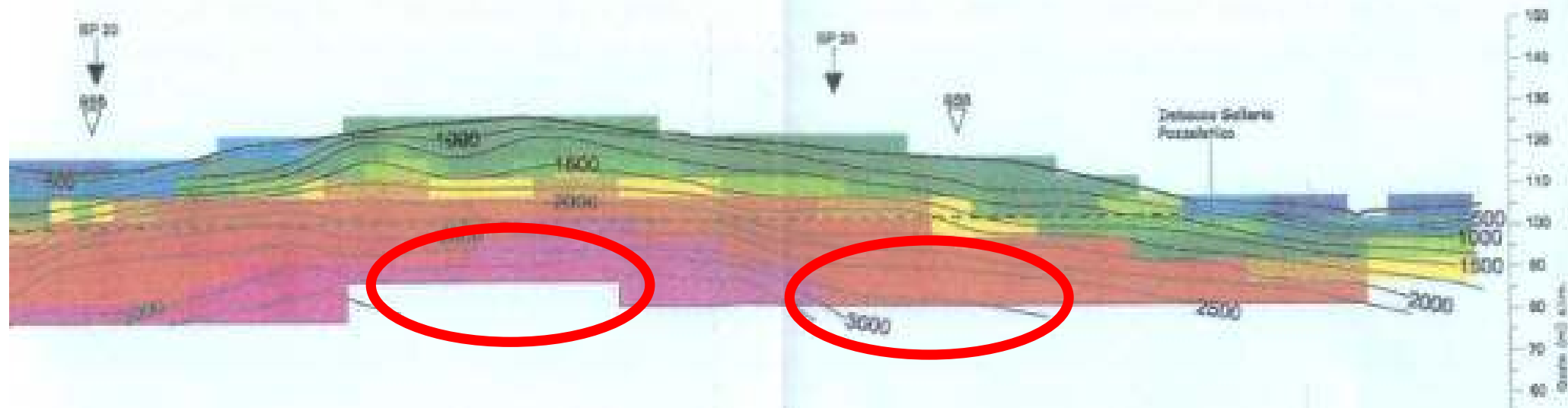
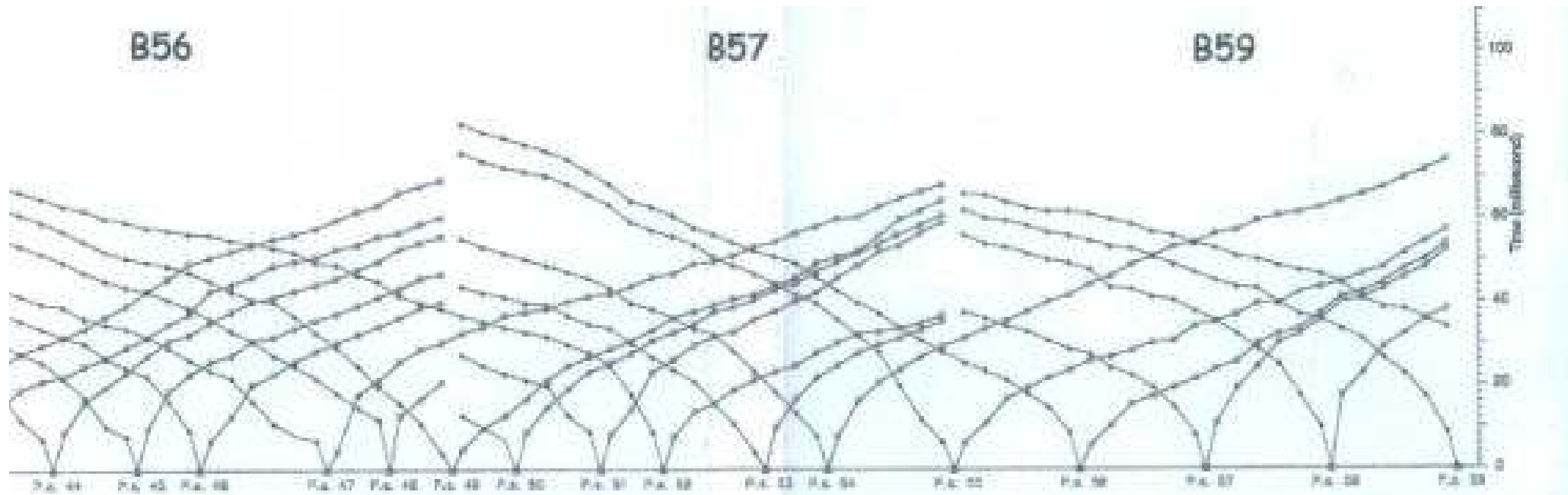
Dr. Geol. Maurizio Furani
Dr. Geol. Giuseppe Galassi





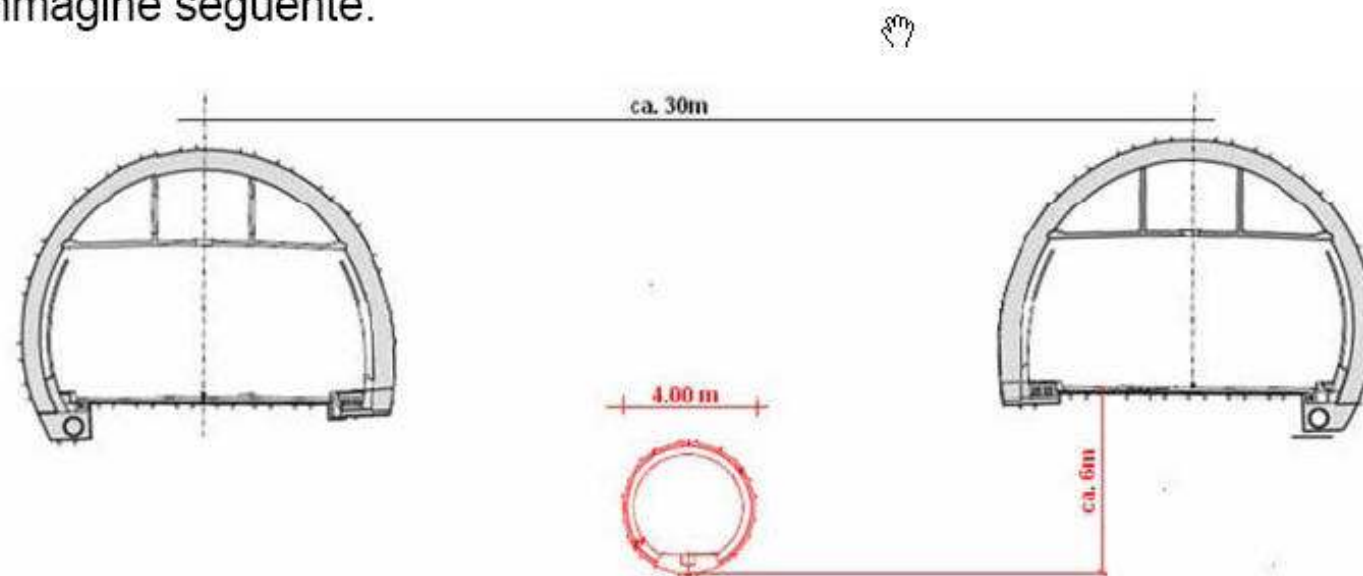






1. INDICAZIONI GENERALI

Il cunicolo tecnico di servizio è stato progettato per una realizzazione (attualmente in corso nell'imbocco lato Grancia) prevista tra le due canne della galleria attuale secondo lo schema presente nell'immagine seguente.



Allo scopo di caratterizzare l'ammasso roccioso e valutarne le caratteristiche tecniche è stata effettuata una indagine sismica dall'interno della galleria in direzione Est (Melide) sulla carreggiata di sorpasso.

Proprio allo scopo di occupare la corsia per il minor tempo possibile ed in orari notturni è stato previsto l'utilizzo di una acquisizione dati mediante tecnologia "streamer" con la quale si è indagato l'intera sezione di **1710** m nella notte del 4 giugno dalle ore 22.00 alle 04.00 del 5 giugno.





702019.dat	215 KB	04/06/2008 21.47
702020.dat	215 KB	04/06/2008 21.48
702021.dat	215 KB	04/06/2008 21.49
702022.dat	215 KB	04/06/2008 21.50
702023.dat	215 KB	04/06/2008 21.51
702024.dat	215 KB	04/06/2008 21.52
702025.dat	215 KB	04/06/2008 21.52
702026.dat	215 KB	04/06/2008 21.53
702027.dat	215 KB	04/06/2008 21.55
702028.dat	215 KB	04/06/2008 21.55
702029.dat	215 KB	04/06/2008 21.56
702030.dat	215 KB	04/06/2008 21.57
702031.dat	215 KB	04/06/2008 21.58
702032.dat	215 KB	04/06/2008 21.58
702033.dat	215 KB	04/06/2008 21.59
702034.dat	215 KB	04/06/2008 22.00
702035.dat	215 KB	04/06/2008 22.01
702036.dat	215 KB	04/06/2008 22.02
702037.dat	215 KB	04/06/2008 22.03
702038.dat	215 KB	04/06/2008 22.04
702039.dat	215 KB	04/06/2008 22.04
702040.dat	215 KB	04/06/2008 22.05
702041.dat	215 KB	04/06/2008 22.05

1870 metri

D- i 2 metri

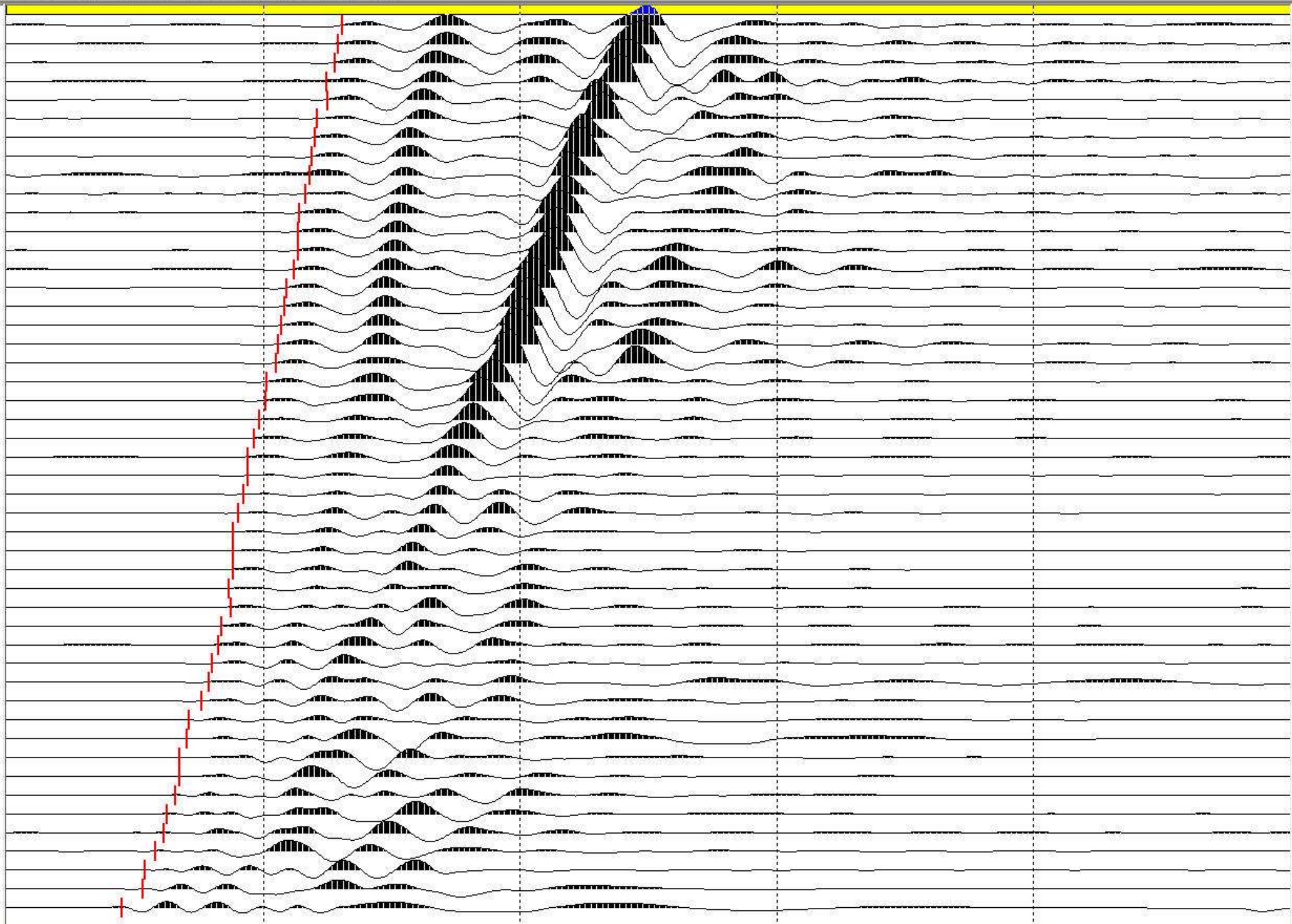
48 geof per record

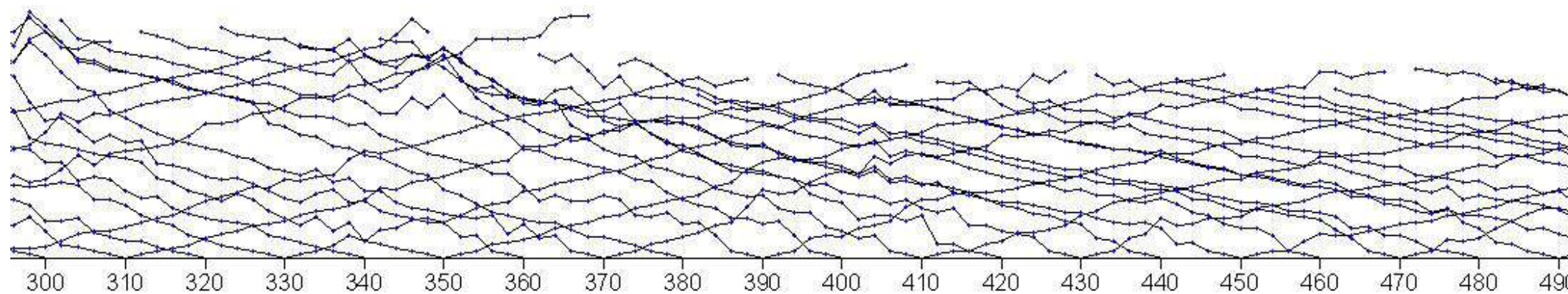
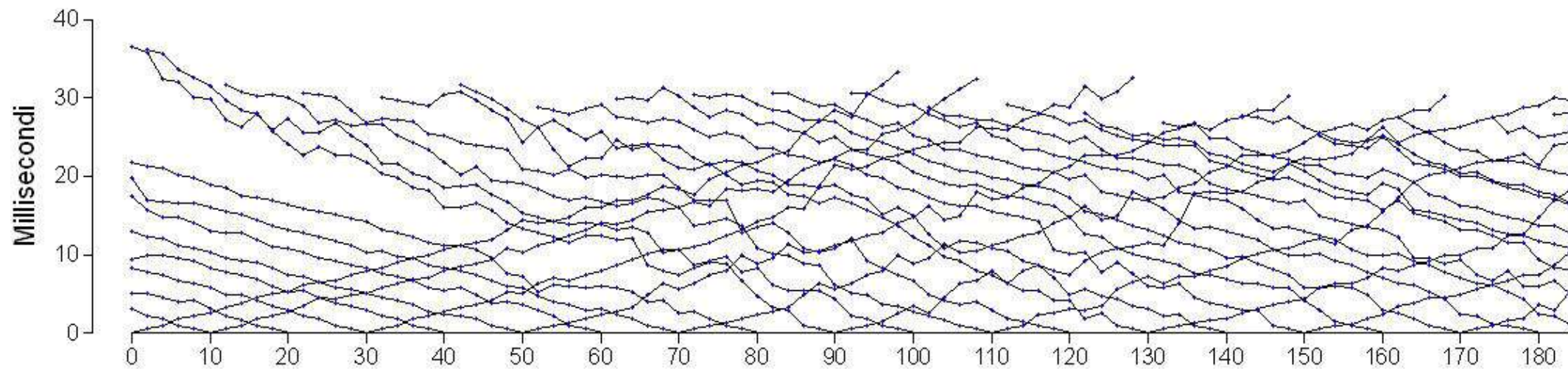
Stendimento da 94 m

5 shot point

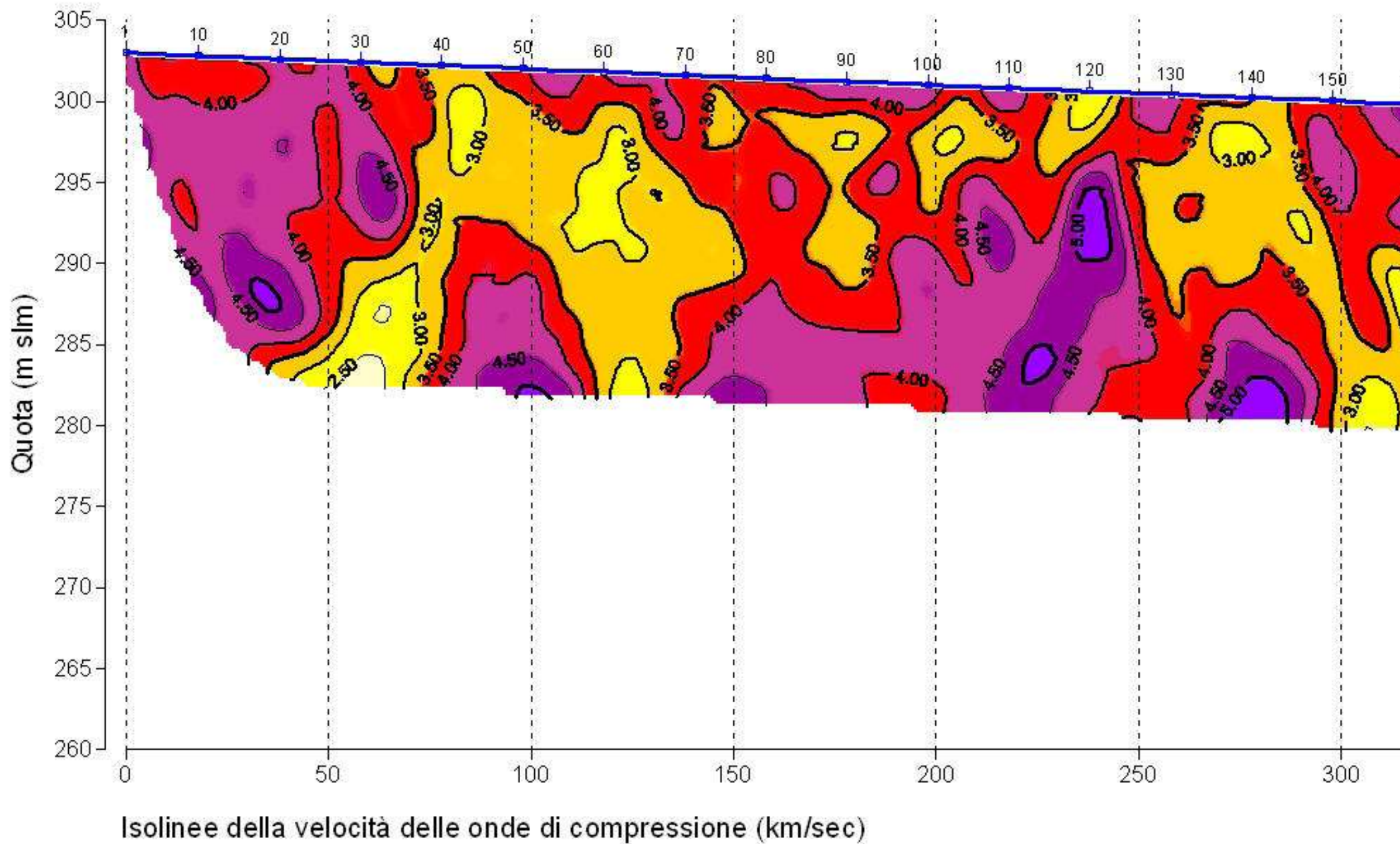
1 shot ogni 10 metri

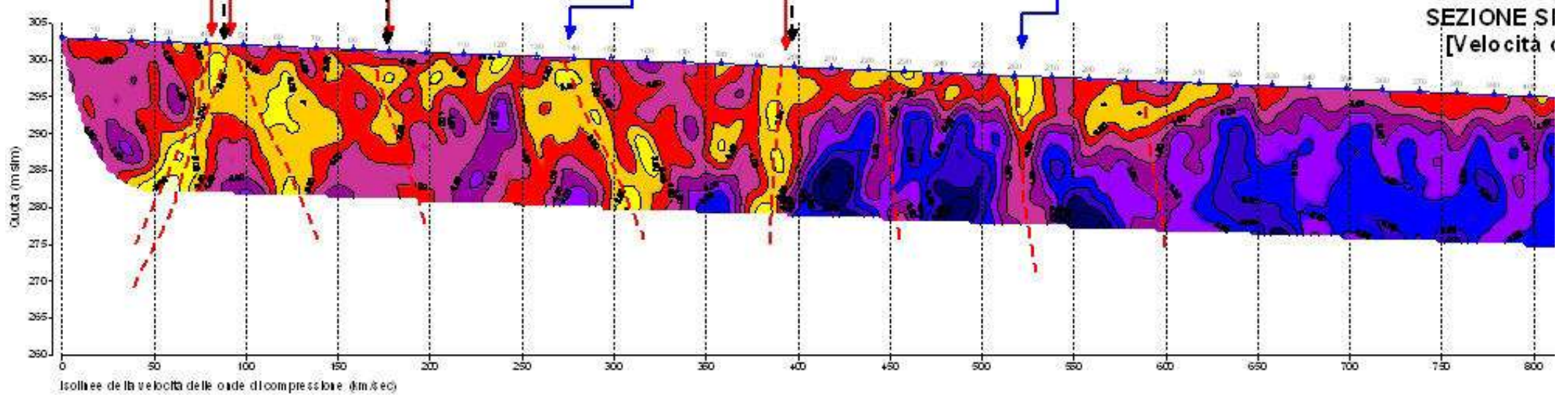
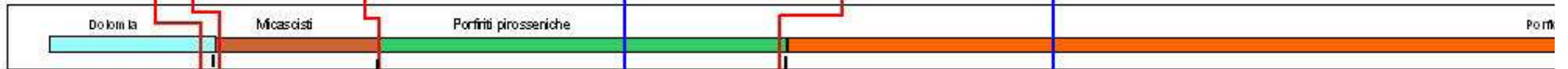
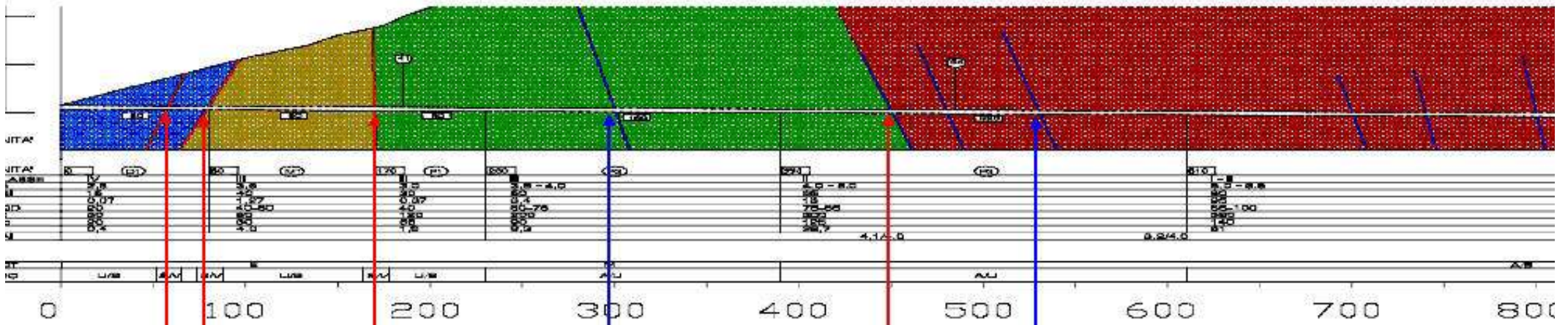
5 ore di registrazioni



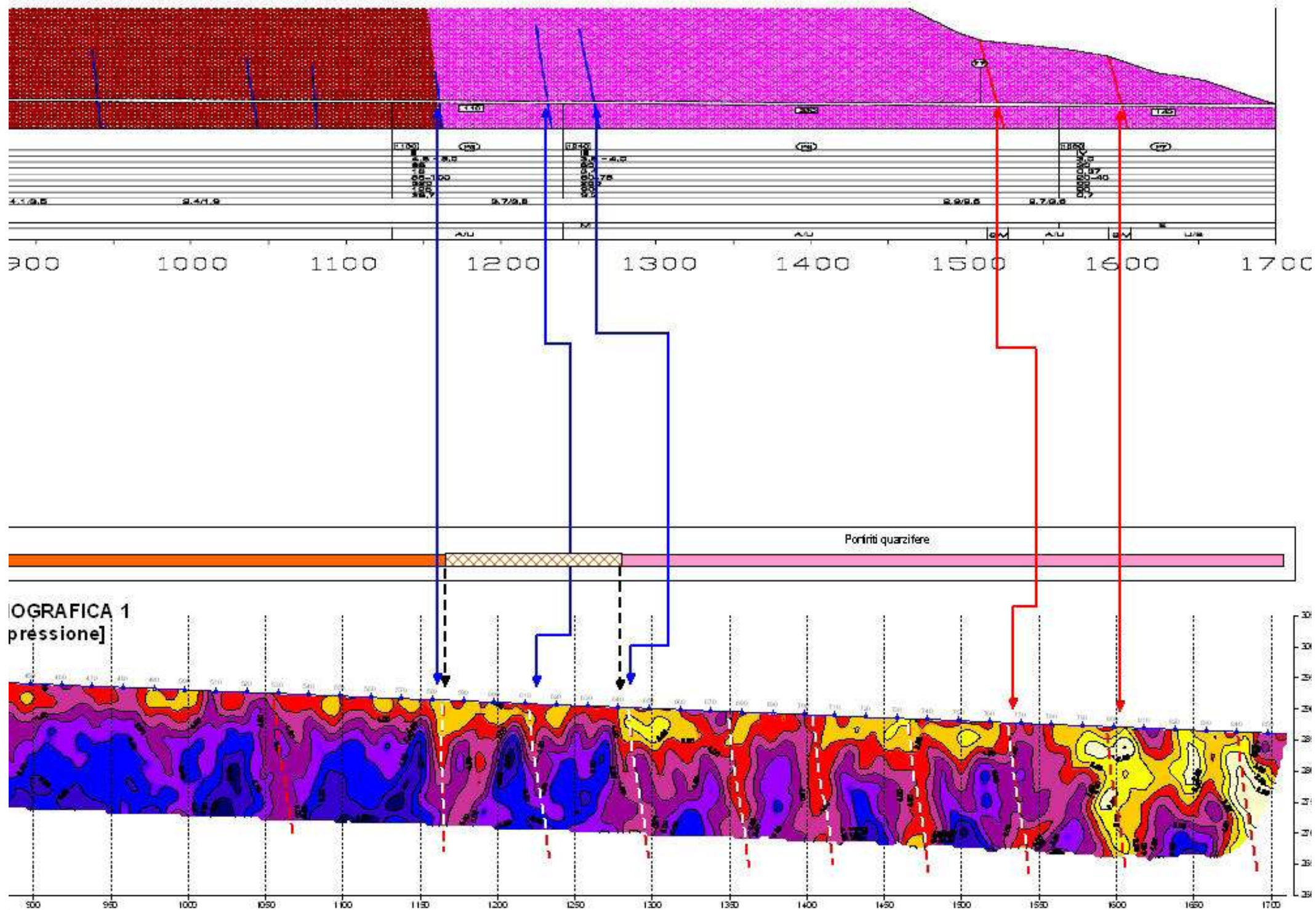


<---- IMBOCCO GALLERIA LATO GRANCIA





O-TECNICO



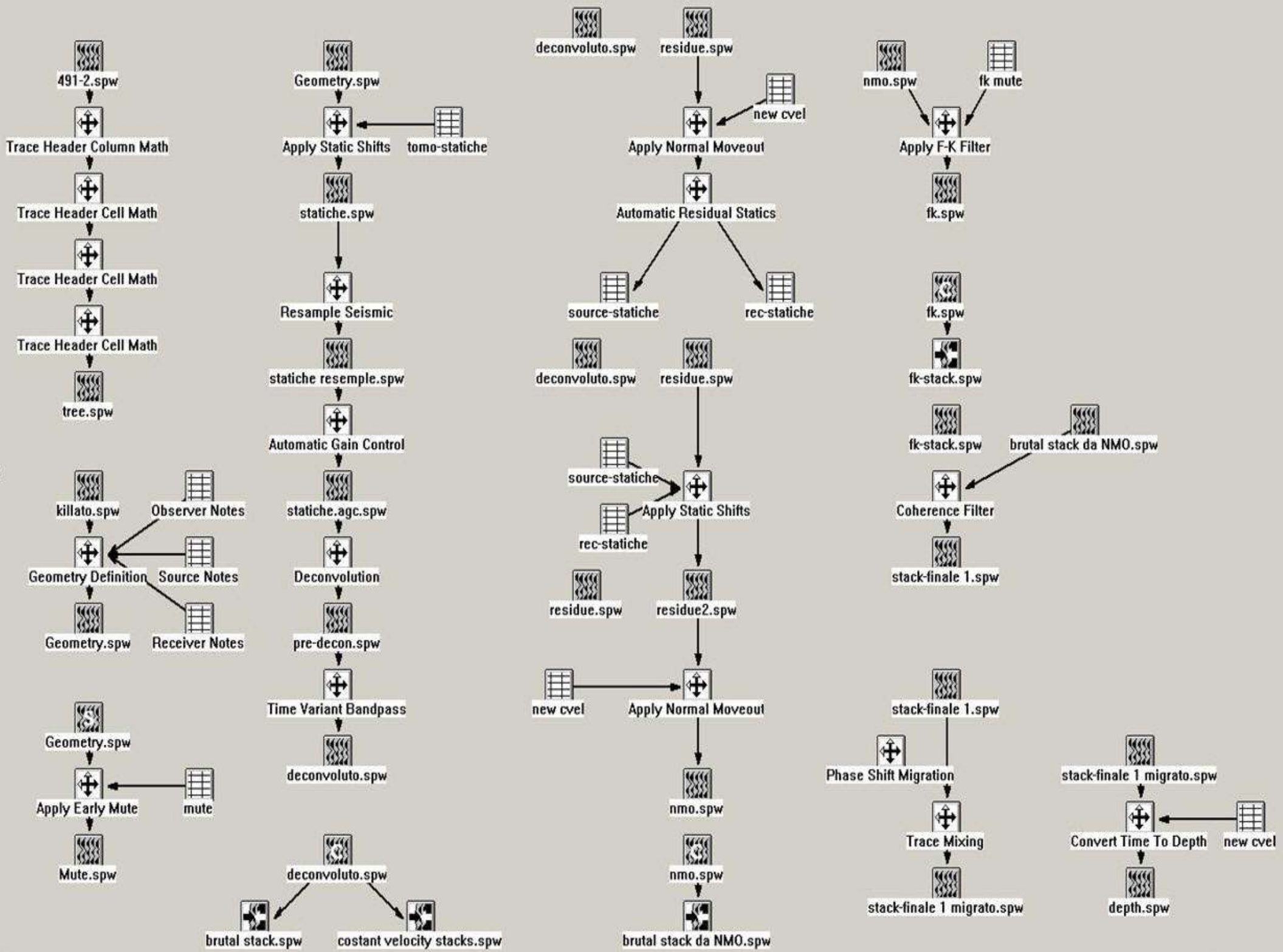






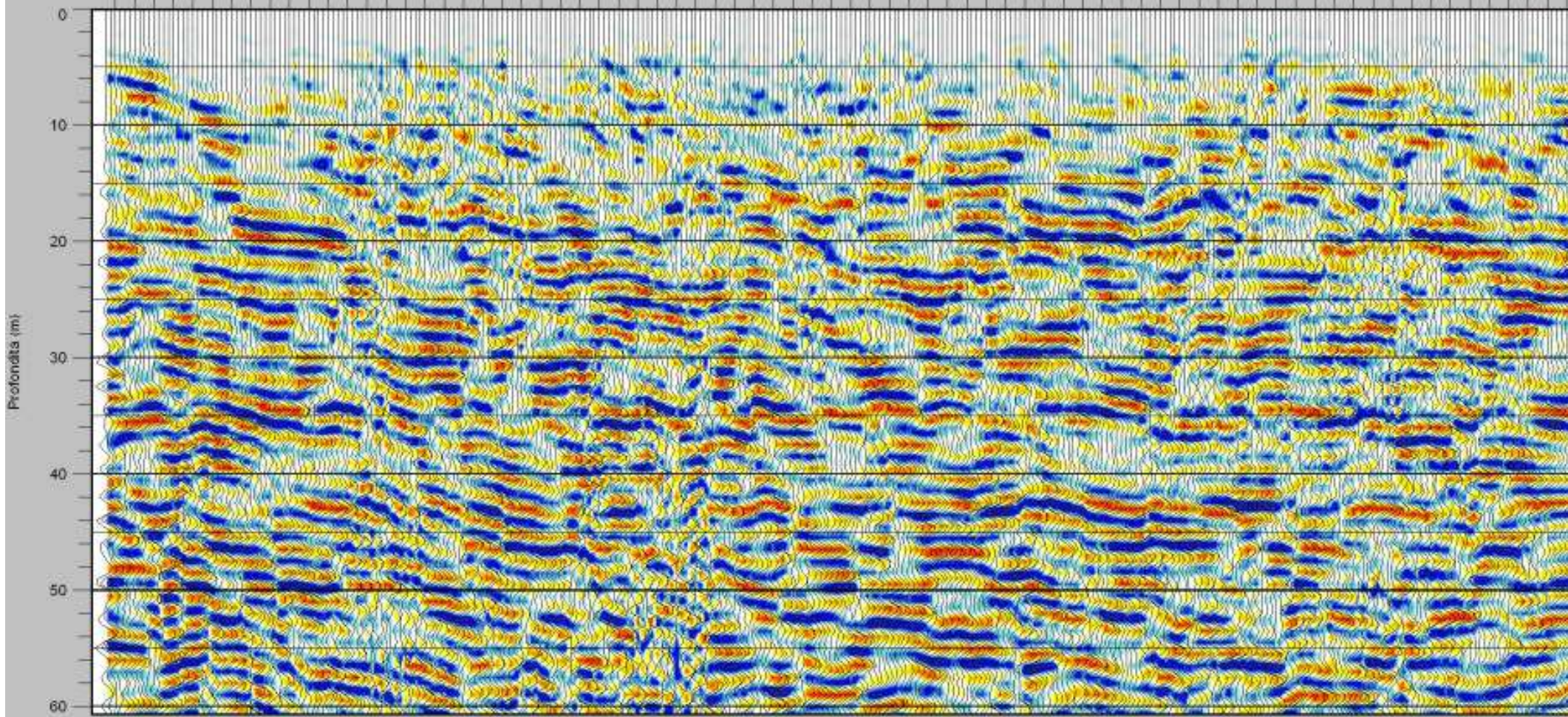
7140201.dat	403 KB	Surfer Worksheet	19/06/2008 10.40
7140202.dat	403 KB	Surfer Worksheet	19/06/2008 10.46
7140203.dat	403 KB	Surfer Worksheet	19/06/2008 10.47
7140204.dat	403 KB	Surfer Worksheet	19/06/2008 10.48
7140205.dat	403 KB	Surfer Worksheet	19/06/2008 10.49
7140206.dat	403 KB	Surfer Worksheet	19/06/2008 10.50
7140207.dat	403 KB	Surfer Worksheet	19/06/2008 10.50
7140208.dat	403 KB	Surfer Worksheet	19/06/2008 10.51
7140209.dat	403 KB	Surfer Worksheet	19/06/2008 10.52
7140210.dat	403 KB	Surfer Worksheet	19/06/2008 10.53
7140211.dat	403 KB	Surfer Worksheet	19/06/2008 10.56
7140212.dat	403 KB	Surfer Worksheet	19/06/2008 10.57
7140213.dat	403 KB	Surfer Worksheet	19/06/2008 10.59
7140383.dat	403 KB	Surfer Worksheet	19/06/2008 12.34
7140384.dat	403 KB	Surfer Worksheet	19/06/2008 12.35
7140385.dat	403 KB	Surfer Worksheet	19/06/2008 12.35
7140386.dat	403 KB	Surfer Worksheet	19/06/2008 12.36
7140387.dat	403 KB	Surfer Worksheet	19/06/2008 12.36
7140388.dat	403 KB	Surfer Worksheet	19/06/2008 12.37
7140389.dat	403 KB	Surfer Worksheet	19/06/2008 12.37
7140390.dat	403 KB	Surfer Worksheet	19/06/2008 12.38
7140391.dat	403 KB	Surfer Worksheet	19/06/2008 12.38
7140392.dat	403 KB	Surfer Worksheet	19/06/2008 12.39
7140393.dat	403 KB	Surfer Worksheet	19/06/2008 12.39
7140394.dat	403 KB	Surfer Worksheet	19/06/2008 12.40
7140395.dat	403 KB	Surfer Worksheet	19/06/2008 12.40
7140396.dat	403 KB	Surfer Worksheet	19/06/2008 12.41
7140397.dat	403 KB	Surfer Worksheet	19/06/2008 12.41
7140398.dat	403 KB	Surfer Worksheet	19/06/2008 12.42
7140399.dat	403 KB	Surfer Worksheet	19/06/2008 12.42
7140400.dat	403 KB	Surfer Worksheet	19/06/2008 12.43
7140401.dat	403 KB	Surfer Worksheet	19/06/2008 12.43

SPACING GEOFONI 0.5 M
RECORD DA 48 GEOFONI
SHOT OGNI METRO
CONFIGURAZIONE END-ON
COPERTURA 1200%
200 SHOT IN 2 ORE

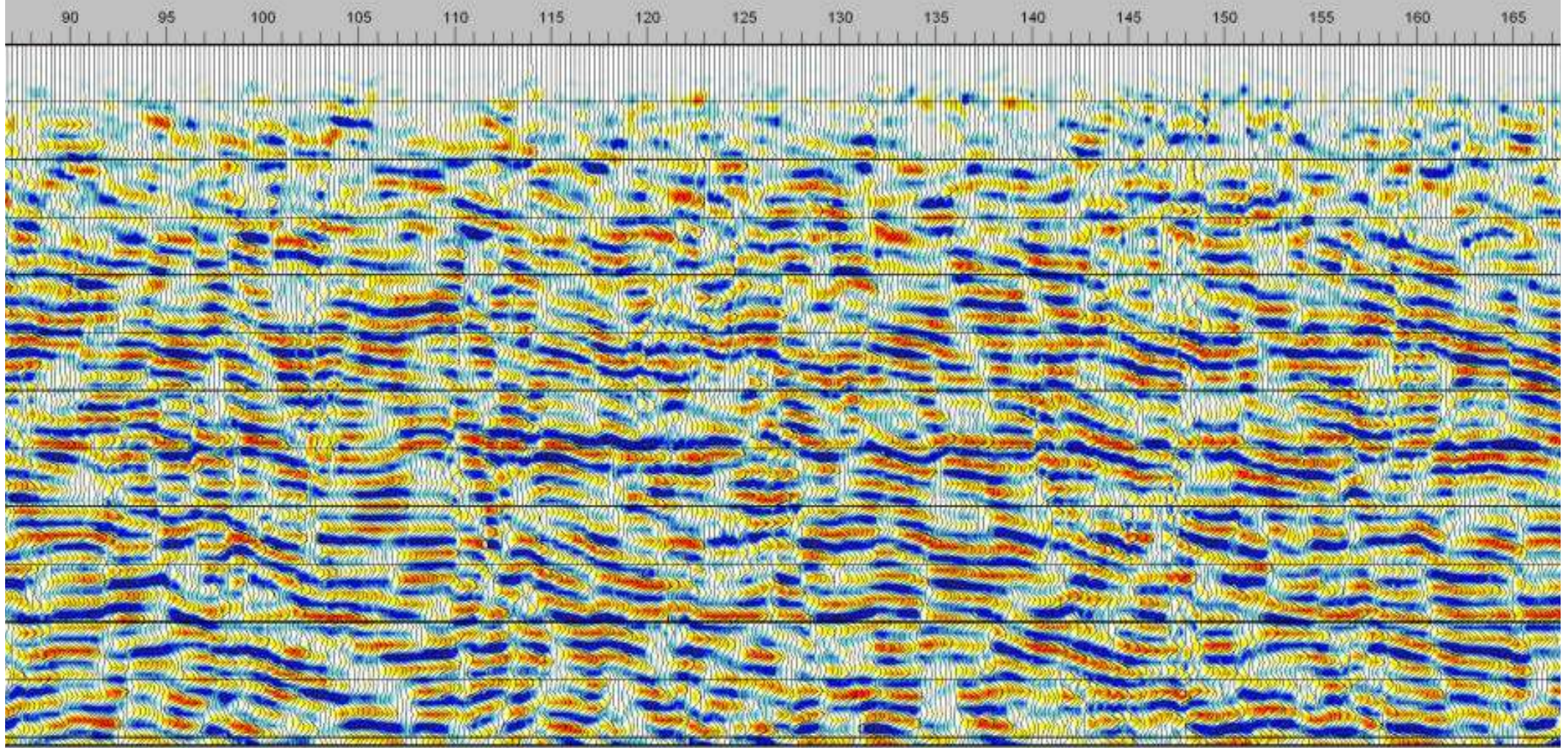


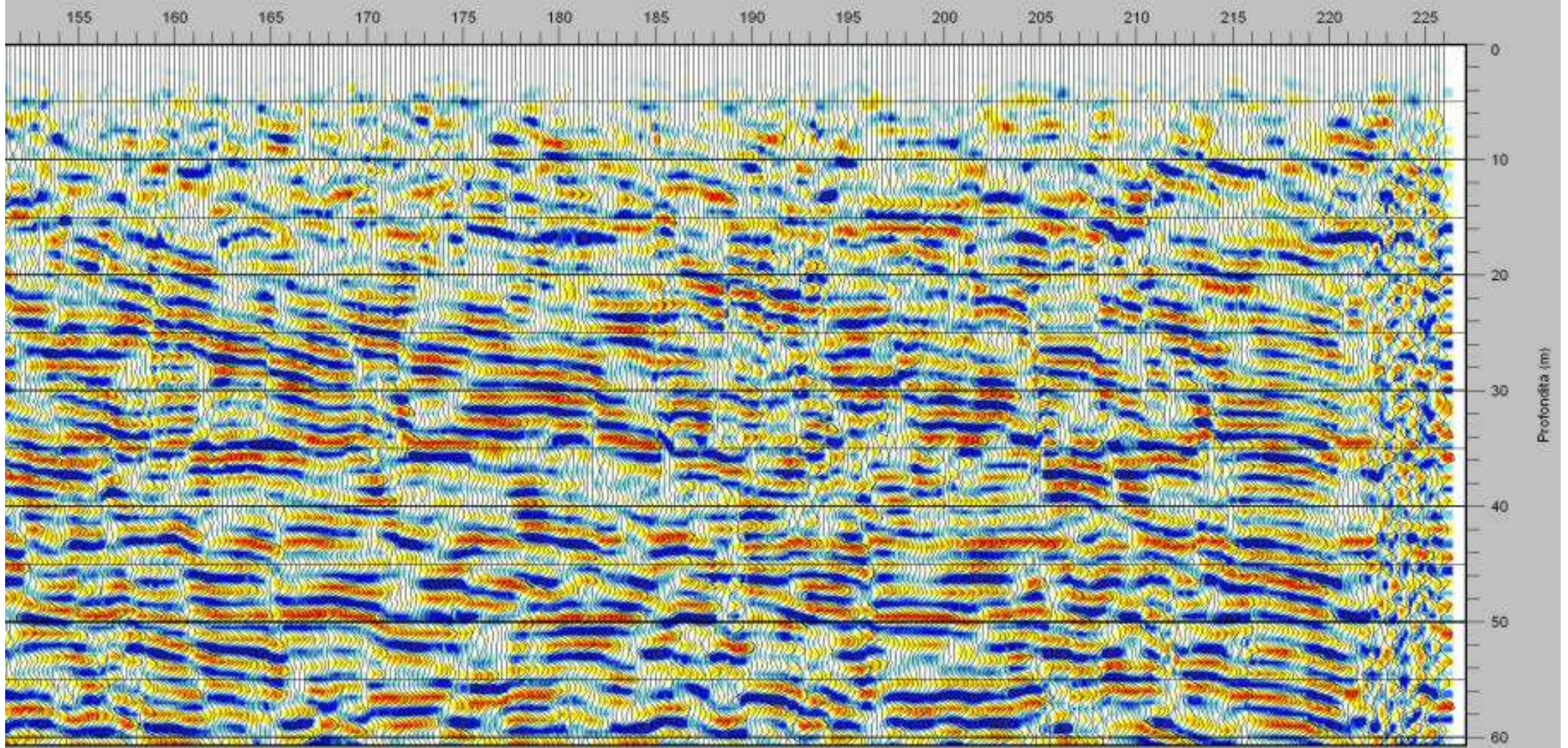
CMP Line 1

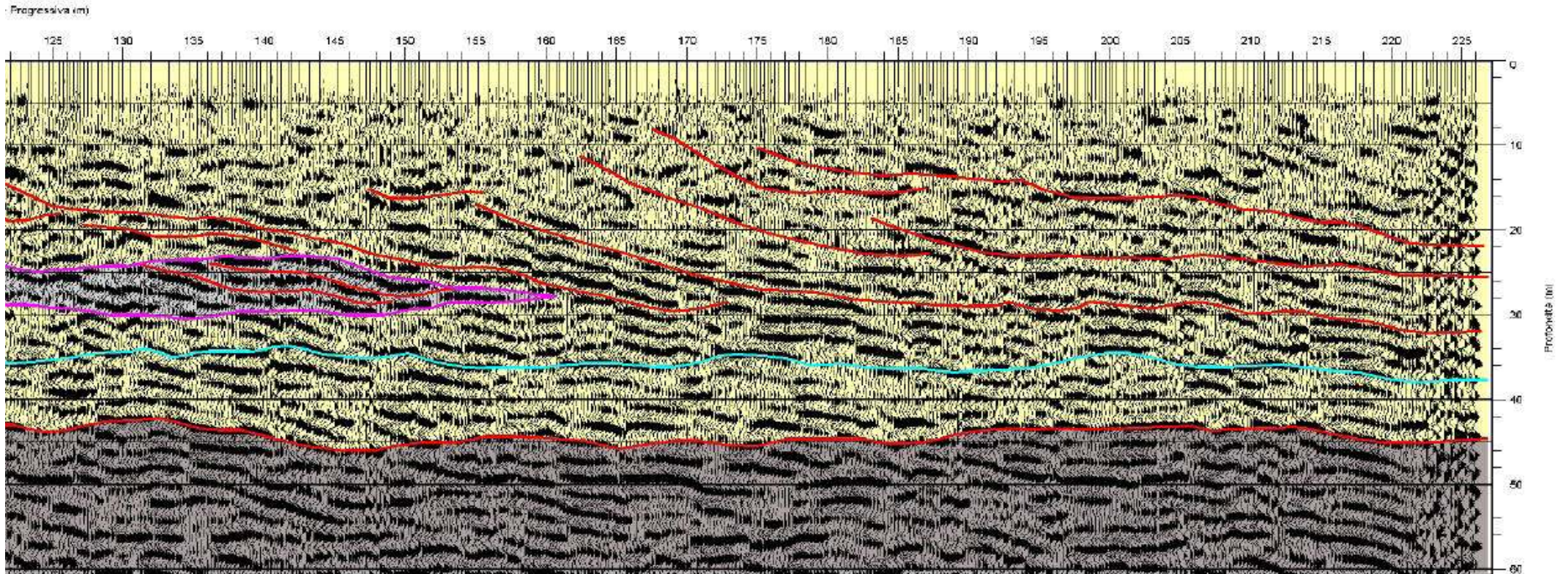
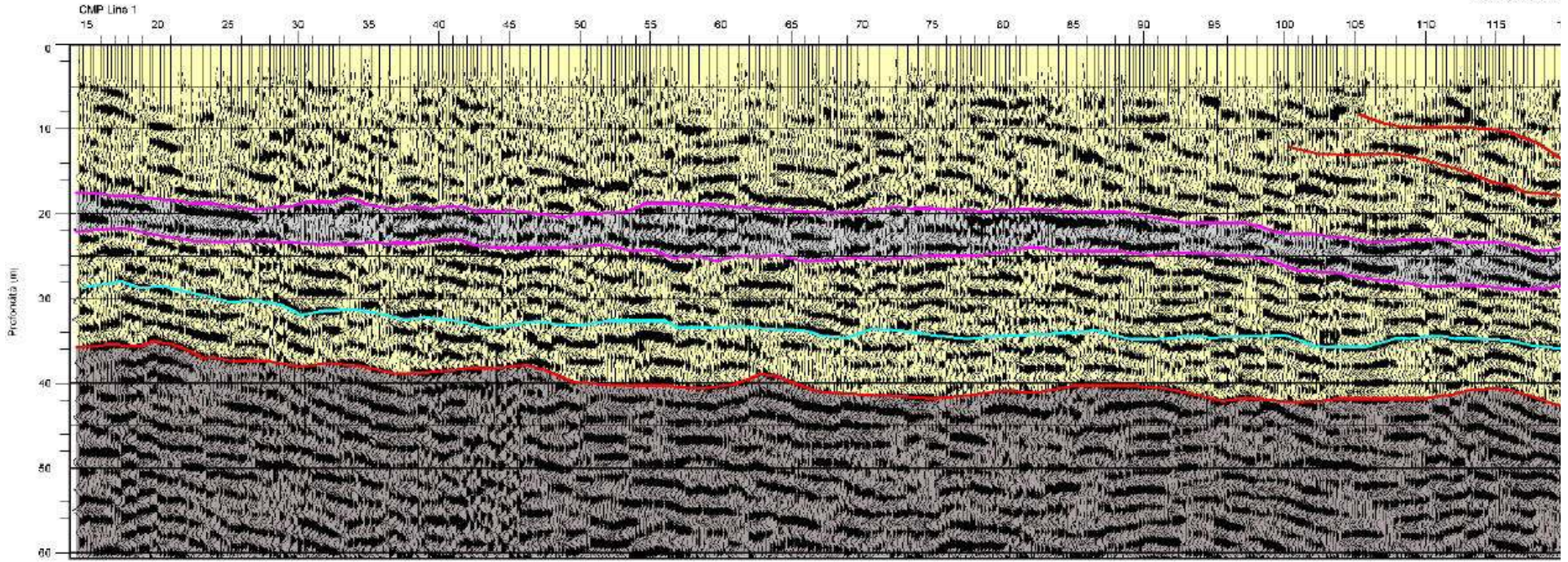
15 20 25 30 35 40 45 50 55 60 65 70 75 80 85 90



Sezione a riflessione 1 - Progressiva (m)





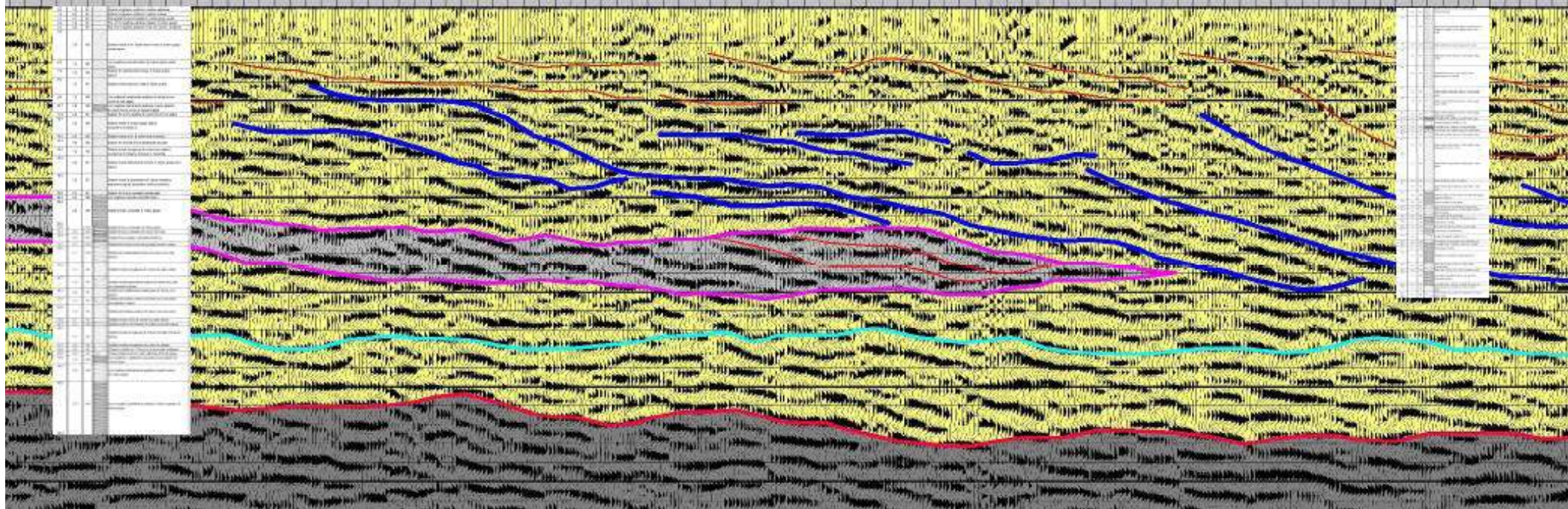


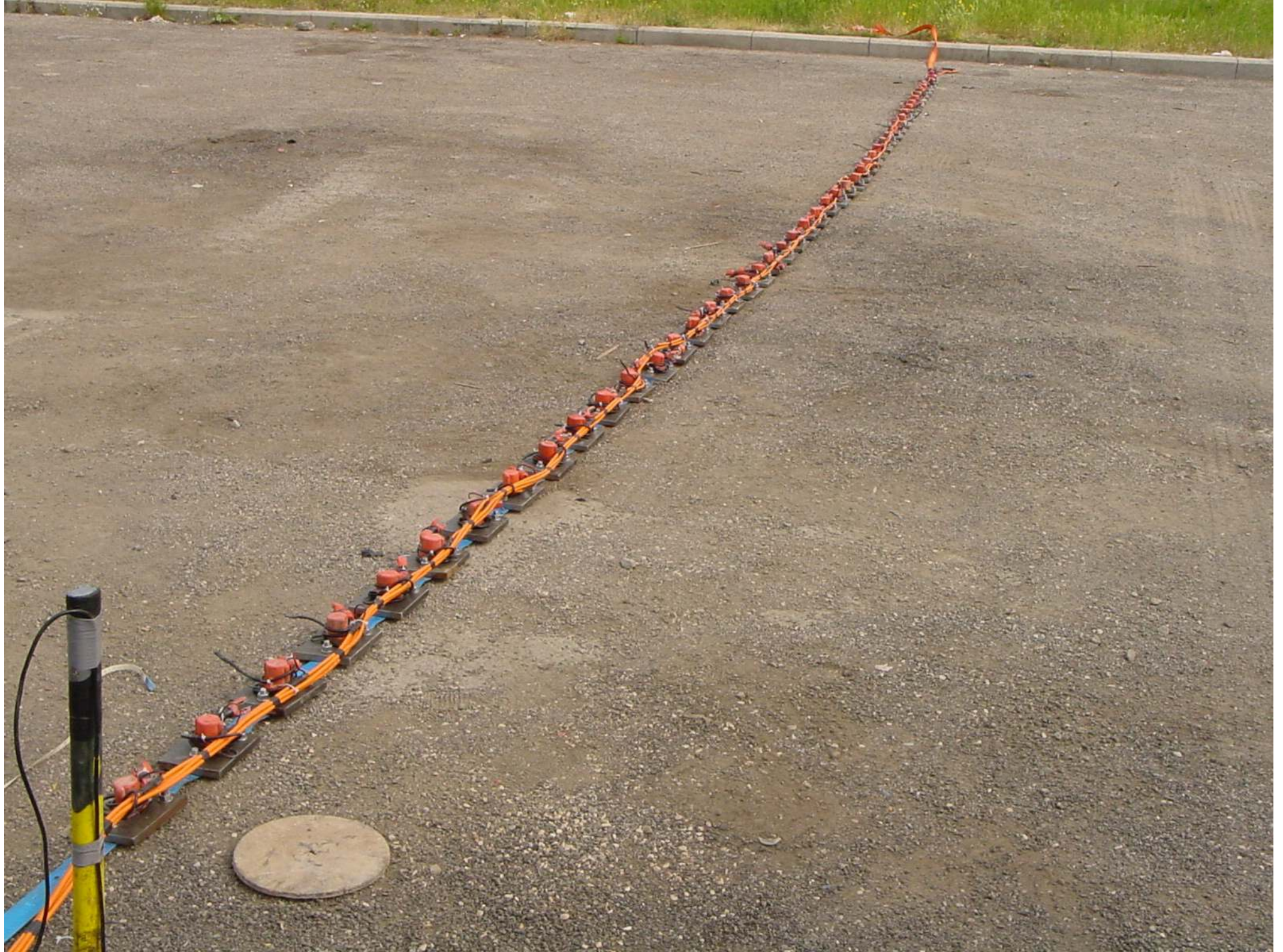
IS 3

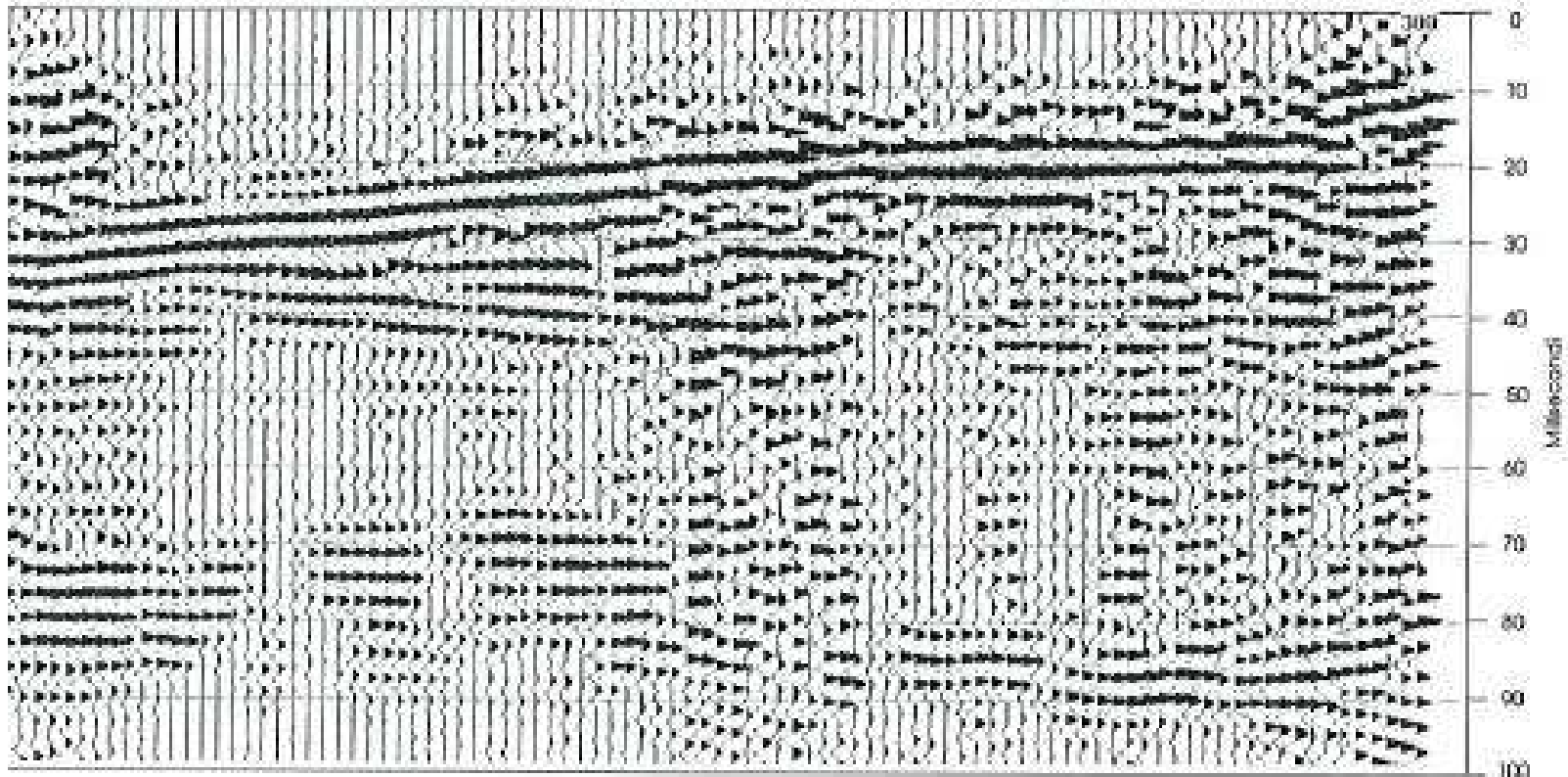
Sezione a riflessione 1 - Progressiva (m)

IS 13

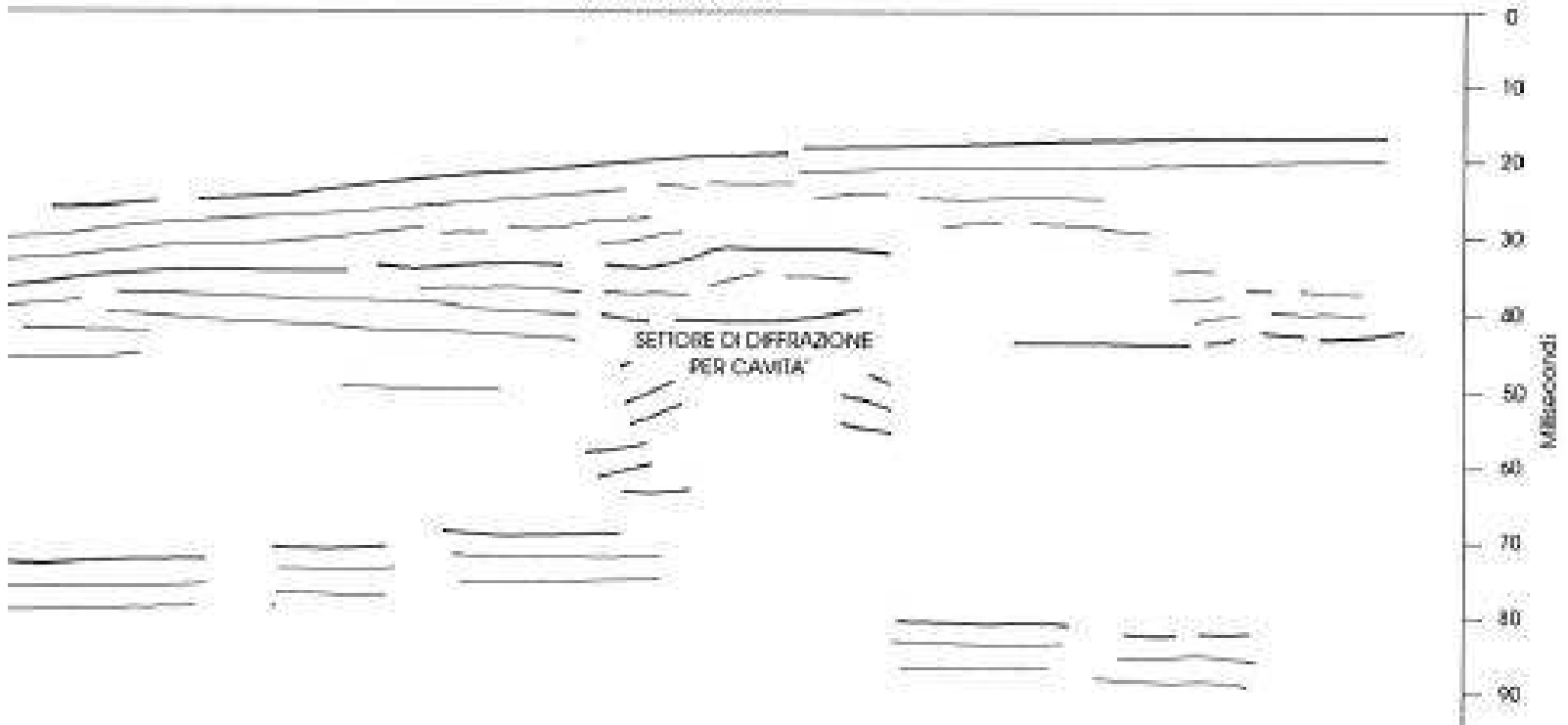
90 95 100 105 110 115 120 125 130 135 140 145 150 155 160 165 170 175 180 185







ANALISI DEI PATTERN



GRAZIE PER L'ATTENZIONE

PER INFORMAZIONI E ALTRO NON ESITATE A CONTATTARMI

PROGEO S.r.l.
Via Talete 10\8
47100 FORLI'
0543 723580 - 348 2619724
mail.progeo@gmail.com
progeo.info

